

## General

To avoid vehicle downtime due to discharged batteries, it is possible to order a dual battery system from the factory. The role of this system is to ensure engine start.

## Function

Trucks can be factory fitted with a dual battery system, comprising 2 + 2 12 V batteries:

- Separate starter batteries (spiral cell batteries) that ensure the vehicle always has the current required for engine start.
- Service batteries (gel batteries), which are permanently connected to the vehicle and provide power to power consumers when the engine is switched off.

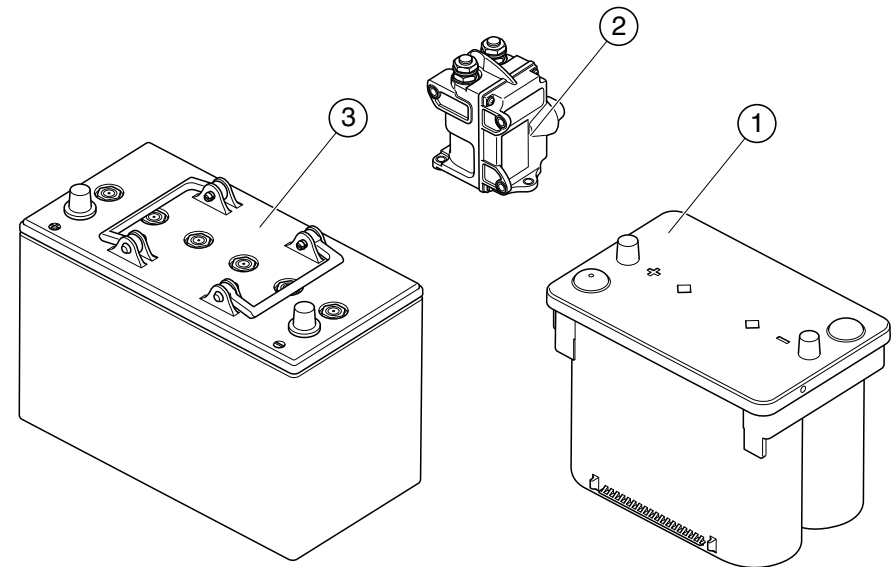
The starter batteries are only used to start the engine. After charging, they are disconnected from the vehicle's electrical circuit.

Each battery is connected in series, which provides 24 V system voltage.

## Performance and position

- Starter battery performance: 12 V, 50 Ah and 800 A in accordance with EN. Weight 17 kg each.
- Service battery performance: 12 V, 85 Ah and 350 A in accordance with EN. Weight 30 kg each.

The service batteries and starter batteries are located in the existing battery box on the left-hand frame side of the chassis frame.



1. Starter battery.
2. Starter battery relay.
3. Service battery.

370 119

## Vehicles that should have a dual battery system

Vehicles that have a high level of power consumption when the engine is switched off would benefit enormously from this system.

Examples:

- Vehicles with overnight cabs.
- Distribution vehicles with tail lift.
- Vehicles with short distances driven.

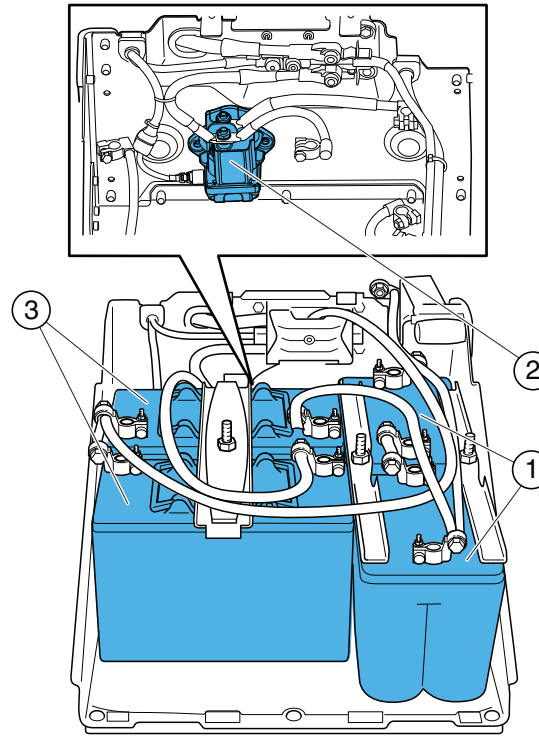
## Ordering

Option	Variant code
Dual battery system	95D



### IMPORTANT!

Jump-starting a vehicle is described under Emergency actions in the Driver's Manual. Follow the instructions to avoid damage to the batteries.



1. Starter batteries.
2. Starter relay.
3. Service batteries.